

Mouse CTLA4 Protein; His Tag

Product Information

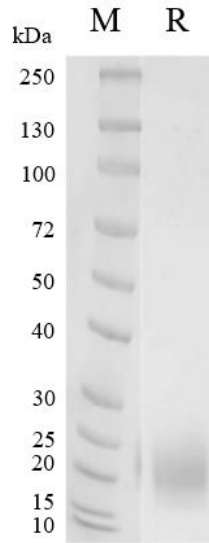
Product Name	Mouse CTLA4 Protein; His Tag
Storage temp.	Store at $\leq -70^{\circ}\text{C}$, stable for 6 months after receipt. Recommend to aliquot the protein into smaller quantities for optimal storage. Please minimize freeze-thaw cycles.
Catalog# / Size	GM-87557RP-100 / 100 μg GM-87557RP-1000 / 1 mg

Protein Information

Alternative Names	CTLA-4,CD152
Source	Mouse CTLA4 Protein; His Tag (GM-87557RP) is expressed from human 293 cells (HEK-293). It contains AA Glu36-Phe162 (Accession # NP_033973). This protein carries a His tag at the C-terminus.
Purity	> 95% as determined by SDS-PAGE
Endotoxin	< 1 EU/ μg , determined by LAL gel clotting assay
Predicted Mol Mass	14.7 KDa
Formulation	Supplied as a 0.2 μm filtered solution of PBS, pH7.4.
Description	<p>CTLA-4 (Cytotoxic T-lymphocyte-associated protein 4) is a protein receptor that plays a crucial role as an immune checkpoint in regulating immune responses. It is expressed on the surface of T cells and helps regulate the immune system to prevent it from attacking healthy cells. CTLA-4 is essential for maintaining immune homeostasis and preventing autoimmune diseases.</p> <p>CTLA-4 inhibits T cell activation by competitively binding to B7 molecules (CD80 and CD86). It is rapidly expressed in the early stages of T cell activation and inhibits T cell activation and proliferation by suppressing co-stimulatory signals. This inhibitory function helps to prevent excessive immune responses and the development of autoimmune diseases.</p> <p>CTLA-4 is of significant importance in immunotherapy as inhibiting CTLA-4 can enhance immune responses and improve anti-tumor immune responses. Anti-CTLA-4 antibodies have been used in the treatment of various tumors such as melanoma. A deep understanding of the CTLA-4 protein and its function aids in the development of new immunotherapy strategies to enhance treatment outcomes for diseases like cancer.</p>

Version:3.3 Revision Date:25/12/2023

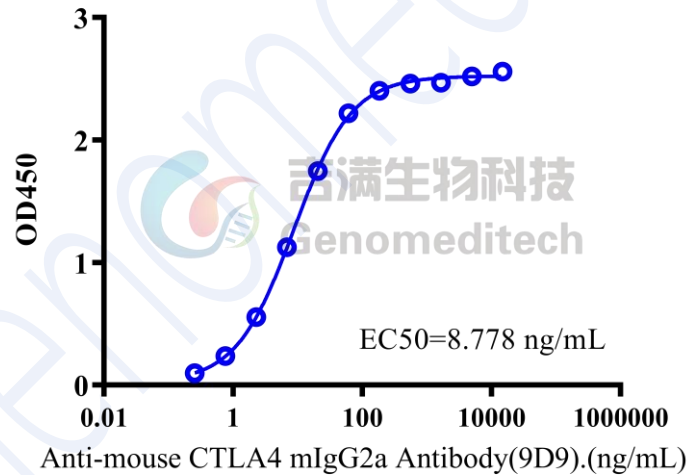
SDS-PAGE



On SDS-PAGE under reducing (R) condition. The gel was stained overnight with Coomassie Blue. The purity of the protein is greater than 95%.

Bioactivity-ELISA

Mouse CTLA4 Protein; His Tag, ELISA 0.1 μ g Mouse CTLA4 Protein; His Tag of per well



Mouse CTLA4 Protein; His Tag (Catalog # GM-87557RP) was immobilized at 1 μ g/ml (100 μ L/well). Increasing concentrations of Anti-mouse CTLA4 mIgG2a Antibody(9D9) (Catalog # GM-87752AB) were added.